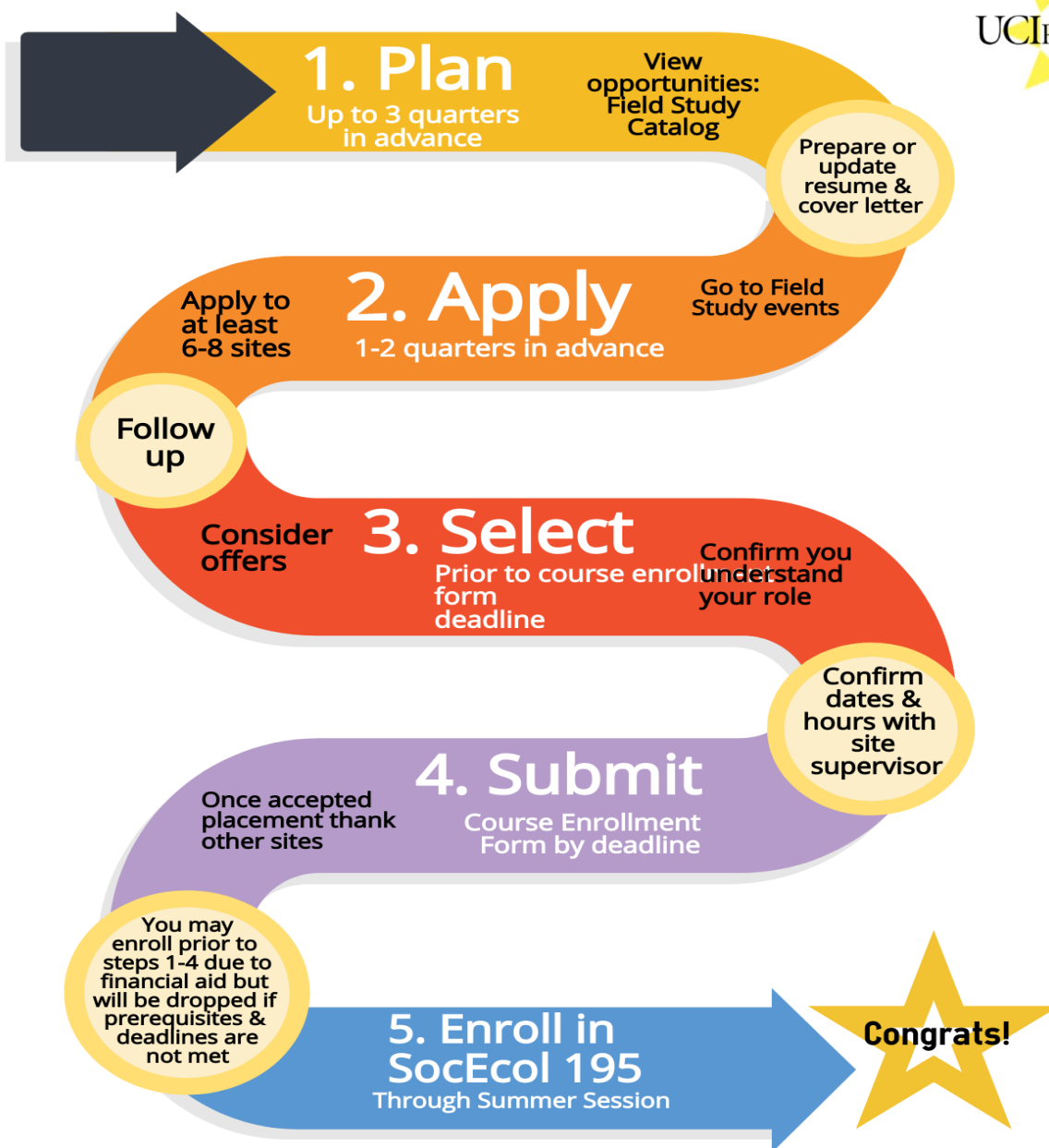


UCI SOCIAL ECOLOGY FIELD STUDY SUMMER 2019 STEPS TO SUCCESS



	10 Week Session 10 or 20 field study hours per week	Summer Session II 20 field study hours per week
Plan and Apply to Sites	Dec– April	Dec-May
Course Enrollment Form Deadline	May 10	June 21
Enroll for Field Study	Prior to June 14	Prior to July 29
Field Study Site Placement Period	Jun 24-Aug 29	Aug 5-Sep 9
Hours to complete	100 or 200 hours *UCDC/UCCS see next page	100 or 200 hours
Field Work Evaluations Due	August 29	September 9

SUMMER SESSION FIELD STUDY INFORMATION AND TIPS

Summer Session Enrollment:

- Enroll in SOCECOL 195 Field Study through the Summer Session website
- Dates for enrollment and fees are available on Summer Session website
- You do not need to be authorized to enroll
- **You will BE DROPPED if you do not meet the course enrollment form deadlines or prerequisites**

SITES NOT LISTED IN THE FIELD STUDY CATALOG WILL NOT BE APPROVED

- Students MAY NOT change placements after the course enrollment deadline
- PRIORITY ENROLLMENT: if enrollment reaches maximum priority will be given to graduating seniors
- Any hours worked before the placement period WILL NOT be credited
- Students are RESPONSIBLE for meeting all deadlines. Including ensuring evaluations are received by the deadline

ACADEMIC REQUIREMENTS

- **ATTENDANCE TO ALL CLASSES FOR 195 IS MANDATORY!**
- Students are RESPONSIBLE for reviewing minimum field study standards at:
<https://fieldstudy.soceco.uci.edu/pages/minimum-standards>
- SocEcol 195 is graded on Pass/No Pass basis only.

TIPS

- Do a self assessment of your career and personal goals to make the most of this opportunity! Accept an offer that is most closely related to your goals and interests.
- You may need an interview, background check, documentation of health or other requirements. When applying it is recommended to include deadline date, placement period, number of hours per week you will be at the site and why you are interested in their organization.

HELPFUL RESOURCES

UCI Division of Career Pathways: <http://www.career.uci.edu/>

Field Study Website: <http://fieldstudy.uci.edu/>

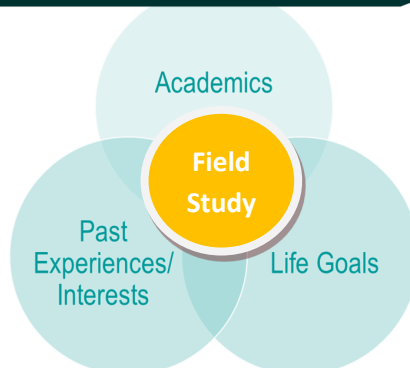
-Field Study Catalog and Field Study Course Enrollment Form

School of Social Ecology workshops: <https://students.soceco.uci.edu/pages/quarter-workshops>

SE 195 PREREQUISITES

- Social Ecology 10 is required
- Social Ecology 13 is recommended
- Declared major in the School of Social Ecology
- 2.0 GPA
- Junior standing (90+ units)
- Accepted a placement at listed Field Study Community Partner site

FIELD STUDY



UNITS & HOURS BREAKDOWN

- Field Study can be taken for either 4 units /100 hours or 8 units/200 hours
- 4 units /100 hours of Social Ecology 195 Field Study is required to graduate.
- Field Study may be repeated for up to 24 units
- If Participating in UCDC/UCCS hours 4 units=200 hours & 8 units=320 hours

UCI School of Social Ecology

Field Study

Field Study Coordinator, Lizet Trujillo

E-mail: SEfieldstudy@uci.edu

949-824-6864

Field study walk-in hours available
Mondays 10-am-12pm
Wednesdays and Thursday 1pm-4pm
For advanced

appointments check our website at:

<https://fieldstudy.soceco.uci.edu/pages/contact-us>