

A Student Guide to Field Study



The Field Study Program was developed as a School of Social Ecology undergraduate degree requirement to immerse students in rigorous, innovative, and engaged learning both in the classroom and through active participation in our community.

ABOUT FIELD STUDY

To complete their School of Social Ecology Field Study requirement, students enroll in a field study course while completing 80 hours of fieldwork throughout the quarter at an approved field placement site.

In the classroom, students engage with faculty and one another through lectures, discussions, writing, and presentations, synthesizing their fieldwork with theory, paradigms, and ideas learned about in their coursework.

With faculty guidance, students explore and develop professional competencies that complement their fieldwork experiences and prepare students for future graduate school and career goals.

During field placement, supervisors provide guidance and mentorship to foster students' professionalization and community engagement, while students thoughtfully contribute to the organizations' programming and help support the communities they serve.

Students have the opportunity to explore a career field, observe and participate in organizational operations, and develop their interpersonal and technical competencies in a supportive, professional learning environment.



FIELD STUDY STEPS TO SUCCESS

1 PLAN

- Select a quarter, be mindful of deadlines
- Prepare resume & cover letter
- Browse catalog of placement sites

2 APPLY

- Three months before the Course Enrollment Form deadline
- Apply to 3-6 sites
- Be professional & follow up

3 SELECT

- Consider placement offers
- Select a placement
- Accept an offer before the Course Enrollment Form deadline

4 SUBMIT

- Once a placement is SECURED
- Submit Course Enrollment Form by the appropriate deadline

5 ENROLL

- Enroll through WebReg once authorized and notified by our office

2021 - 2022

Field Study Student Calendar

	Fall 2021	Winter 2022	Spring 2022
Plan & Apply	Jul - Aug	Aug - Oct	Nov - Jan
Course Enrollment Form Opens	Monday, Aug 2	Monday, Sep 6	Monday, Dec 6
Course Enrollment Form Deadline	Friday, Sep 3	Friday, Nov 5	Friday, Feb 4
Enroll (upon authorization)	Week of Sep 13	Week of Nov 15	Week of Feb 21
Placement Period	Sep 20 - Dec 3	Jan 3 - Mar 11	Mar 23 - Jun 3
Hours Required & Deadline to complete	80 hours by Dec 3	80 hours by Mar 11	80 hours by Jun 3
Final Evaluation Due	Wed, Dec 8	Wed, Mar 16	Web, Jun 8

IMPORTANT NOTES

- Spring field study typically has the highest enrollment and is the most competitive quarter for securing a field placement. Therefore, students who meet all prerequisites should consider completing their Field Study requirement during the fall or winter quarters.
- **For F-I Visa International Students:** Visit the [International Center website](#) (before submitting a Course Enrollment Form) for information on [Curricular Practical Training](#); eligibility, deadlines & submission process

SocEcol 195

Field Study

- 4 units of SE 195 (coursework + 80 fieldwork hours) fulfills the SE Field Study requirement
- Must be taken P/NP
- Class meets 50-80 minutes per week, up to 10 times per quarter
- Most sections meet 5-6 times per quarter
- Expect to spend approximately 1-2 hours per week on assignments (outside of class/fieldwork)
- Class paper/s = 2,500+ words (+625 words for each extra unit beyond 4)

SocEcol 195W

Field Study + Upper Division Writing

- 4 units of SE 195W (coursework + 80 fieldwork hours) fulfills the SE Field Study + UDW requirements
- Must be taken for a grade; 'C' or better fulfills Upper Division Writing requirement
- Class meets for 50 minutes per week
- All sections meet 10 times per quarter
- Expect to spend approximately 2-3 hours per week on assignments, paper drafts, and building writing skills (outside of class/fieldwork)
- Class paper/s = 4,000+ words (+625 words for each extra unit beyond 4)



Prerequisites

- SocEcol 10
- 90+ Units
- Minimum 2.0 GPA
- Secured position at approved field study site
- Course enrollment form submitted by deadline

Prerequisites

- Lower division writing completed
- SocEcol 10
- 90+ Units
- Minimum 2.0 GPA
- Secured position at approved field study site
- Course enrollment form submitted by deadline

Fieldwork Roles and Expectations

Placement Supervisors Will:

- Provide a safe and supportive learning environment
- Assign roles and duties through which students can develop both technical and soft skills
- Clearly communicate expectations and responsibilities to students
- Provide adequate training and instruction for all assigned roles and duties
- Adhere to field study program timelines and guidelines
- Provide weekly 1:1 supervision, feedback, and mentoring
- Openly address student concerns and communicate concerns to the field study office as needed
- Confirm student placement hours and submit final evaluations after discussing feedback with student interns
- Nominate outstanding students for recognition

Student Interns Will:

- Be active participant observers
- Be professional, engaged, and inquisitive
- Respect and adhere to agency and UCI policies
- Support agency needs and goals through structured, supervised activities
- Regularly check in with and report progress to their assigned supervisors
- Communicate concerns or challenges to their placement supervisors



Earning APPLAUSE in Field Study



A guide to fieldwork learning goals for students



Apply assigned fieldwork activities to the organization's broader goals and outcomes

Why is this task important and how will its completion help the organization meet a short or long-term goal?

Prepare for the culture, norms, and etiquette of the workplace

How do professionals in this field typically interact and communicate amongst themselves and with clients/stakeholders?

Practice communication, leadership, and collaboration skills

Develop and strengthen verbal and written communication, teamwork, and leadership skills.

Learn technical skills and competencies relevant to this field

Develop a basic knowledge of relevant skills and competencies for professionals in this field.

Acknowledge the challenges and benefits of careers in this field

What are some pros and cons associated with working in this field?

Understand career opportunities within this field

What are the different career options within the field and the paths toward reaching them?

Spend time with key personnel in the organization through meetings and observations

Gain exposure to various professionals, stakeholders, and clients through observations, informational interviews, and participation in meetings and other activities.

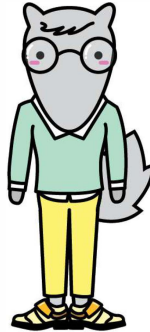
Examine how social problems are identified and addressed within this field

How does this organization's work directly and indirectly support the community?

Additional Info & Resources

KEEP IN MIND...

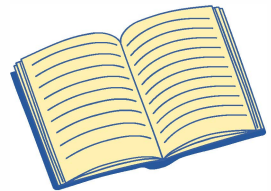
- Students are responsible for meeting all deadlines, including ensuring evaluations are received by the deadline.
- Field Study may be repeated for up to 12 units
- If participating in UCDC/UCCS hours, 4 units = 200 hours & 8 units = 320 hours



- PRIORITY ENROLLMENT: if enrollment reaches capacity, priority will be given to graduating seniors
- Any hours completed before the placement period WILL NOT be credited
- Students may not change placements after the course enrollment deadline

HELPFUL RESOURCES

- [UCI Division of Career Pathways](#)
 - [Resume help](#)
 - [Writing a cover letter](#)
 - [Interview practice](#)
- [Field Study Website](#)
- [Field Study Catalog](#) and [Field Study Course Enrollment Form](#)
- [School of Social Ecology workshops](#)



CONTACT US

<https://fieldstudy.soceco.uci.edu/pages/advising>

Chat or meet with an advisor

Email us anytime at

sefieldstudy@uci.edu